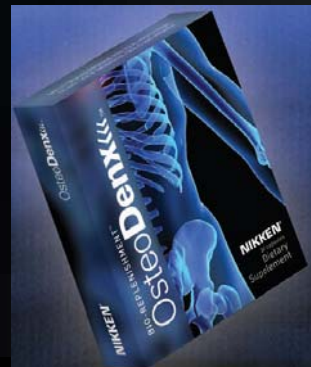


OsteoDenx<<<™

Bio-replenishment Technology for Bone Health Management



Where better bones begins...



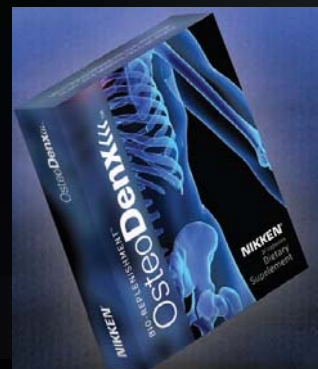
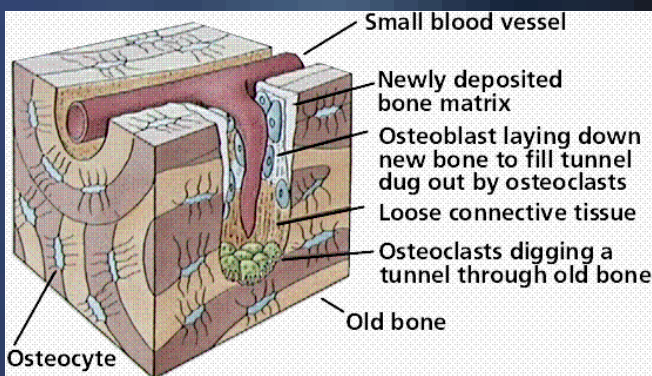
This information is designed exclusively for Independent Nikken Wellness Consultants

The Statistics

- Decreased bone density
 - 34 million Americans > 50 years old
- Bone & joint disease
 - 16 million American adults
- Chronic joint symptoms
 - 66 million (one in three!) American adults

What our Bones Do

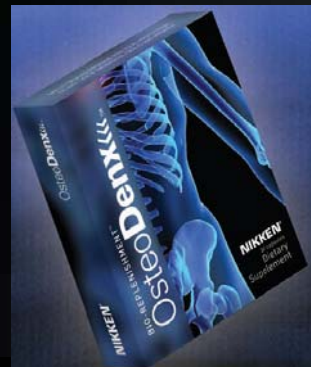
- form the body's structural framework
- protect the internal organs and soft tissues
- produce red and white blood cells
- absorb and store calcium and phosphorus for other body systems to use



The Problem

- Calcium from food or supplements must be absorbed by the bones and converted into useable compounds.
 - The bones = calcium bank account
 - deposits (from food and supplements)
 - withdrawals (to other body systems)
 - When deposits of calcium $>$ withdrawals
 - “bone banks” stay strong and healthy
- Problems occur when the bones release more calcium than they take in.

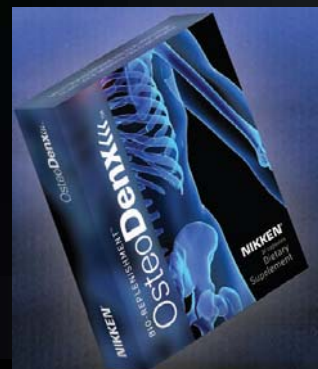
Bones store 99% of the body's calcium. Calcium affects many functions, including nerve conduction, muscle contraction, blood pressure, and hormone regulation.



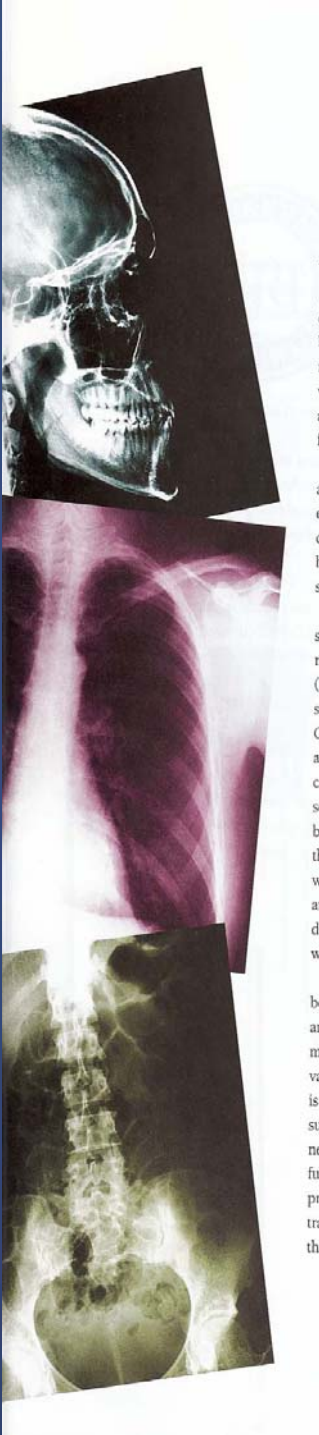
The Problem

Once bone density decreases to a certain level, its structure can no longer hold calcium, regardless of how much is taken in through food or supplements.

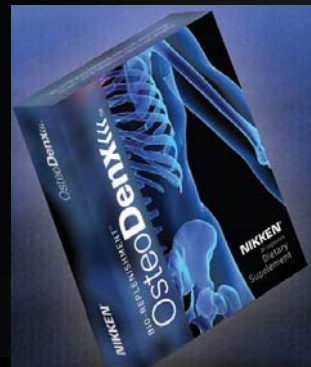
- Decreased bone density contributes to
 - bone fractures, insomnia, muscle spasms, heart palpitations and numbness in the arms and legs.
- Absorption studies have shown that only **10%** of the calcium from most supplements actually enters the cells.



The Problem



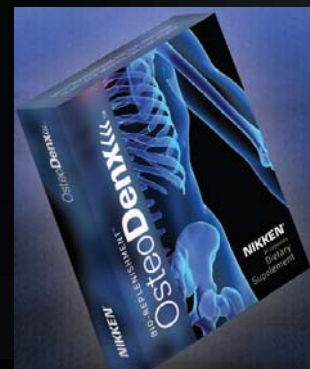
- Our bones must continually rebuild themselves — the skeleton is effectively replaced 10 times in 70 years.
- As we age, however, that rebuilding process slows down.
- Physical activity is known to help build up bone, but few adults receive the exercise they need.
- Obesity and overweight also impose stress on the skeletal structure.
- When daily withdrawals from the ‘bone banks’ are greater than the deposits, our bones become porous and brittle.



What is Bio-Replenishment?

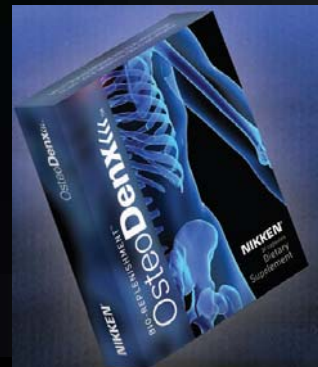
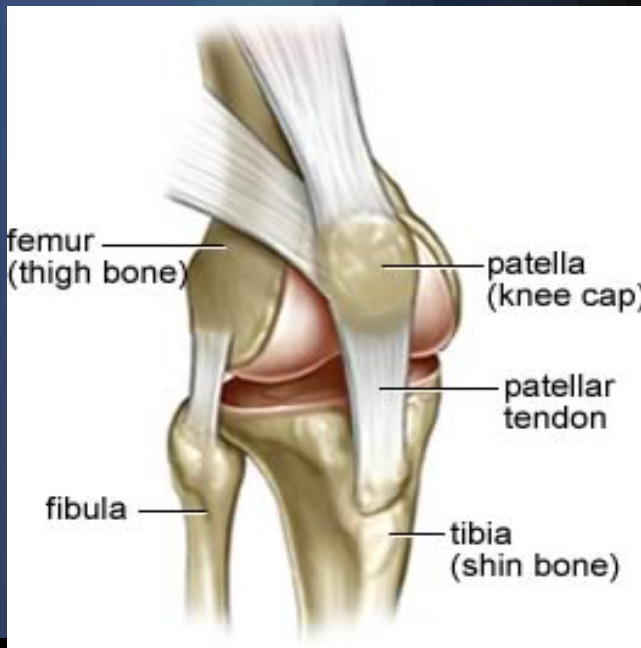
- The body produces a variety of essential chemicals (internal building blocks) that control every function.
- These can only be formed within the body.
- With age and certain diseases, the body produces less of these important chemicals.
- This results in **degenerative disease**.

Bio-Replenishment is a new approach to supplementation, providing a 'delivery system' to enhance the synthesis of these essential biochemicals.



Syno-portin™ Technology

- A targeted transport system, exclusive to Nikken
- Helps in biochemical conversion and absorption
- Enables vital bone health ingredients to reach the specific target site — the joint area, or synovium — for improved bioavailability.
- Promotes the physical process of replacing bone tissue.
- Supports the optimal balance of minerals within bones and joints to help maintain bone density and support the structure and integrity of joint cartilage.



OsteoDenx<<<™



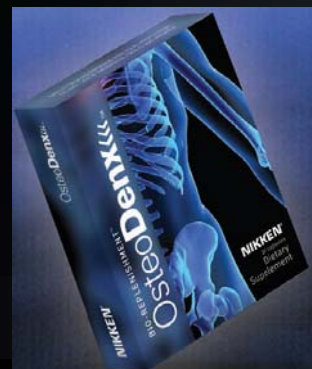
- Developed by **Dr. Narain Naidu**, the world's leading lactoferrin researcher
- Nikken's OsteoDenx formula is the first breakthrough technology in the area of Bio-Replenishment.

OsteoDenx™

- complete bone health management system
- optimizes the levels of all minerals involved in bone metabolism.
 - increases **absorption** of minerals that are too low
 - increases **excretion** of minerals that are too high

OsteoDenx™

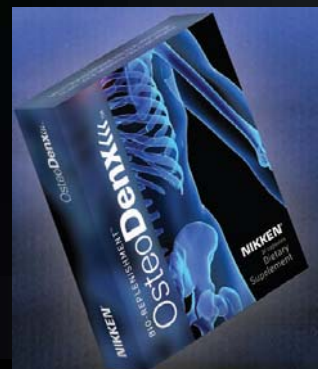
- all natural
- whole-food nutrition
- has no negative side effects
- can be taken safely with other supplements or prescription drugs.



Ingredients

Lactoferrin

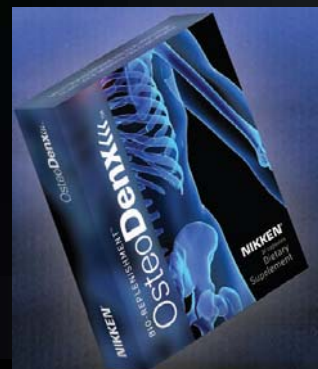
- Naturally-occurring protein found in most body fluids, enhances immunity
- Researchers have discovered that lactoferrin plays an important role in bone metabolism.
 - increases the rate of bone formation up to 5 times.
 - reduces the rate at which bone cells die by 50-70%.
 - also increases the cells that build cartilage
- This results in increased bone density, with promising implications for the treatment of conditions such as fractures and osteoporosis.
- When combined with its powerful anti-inflammatory and immunomodulatory abilities, the potential exists for significant benefits to arthritis and other degenerative joint conditions.



Ingredients

Additional nutrients in the formula include:

- **Hyaluronic Acid**
 - enhances hydration of tissues, cellular repair, facilitates transport of nutrients into cells and removal of waste products
- **Bromelain**
 - natural anti-inflammant and pain reliever
- **Vitamin D**
 - essential for the absorption of calcium in the body
- **Folic Acid**
 - lowers homocysteine levels (associated with osteoporosis and fractures)
- **Zinc**
 - essential for formation of the collagen matrix of bone
- **N-acetyl-D-glucosamine**
 - facilitates joint repair through regeneration of cartilage
- **Chondroitin Sulfate**
 - works synergistically with glucosamine to facilitate joint repair
- **Turmeric Root Extract**
 - natural anti-inflammatory



Effect of Enriched Lactoferrin Supplementation (ELS) on Bone Health in Post-Menopausal Women (Preliminary Results)

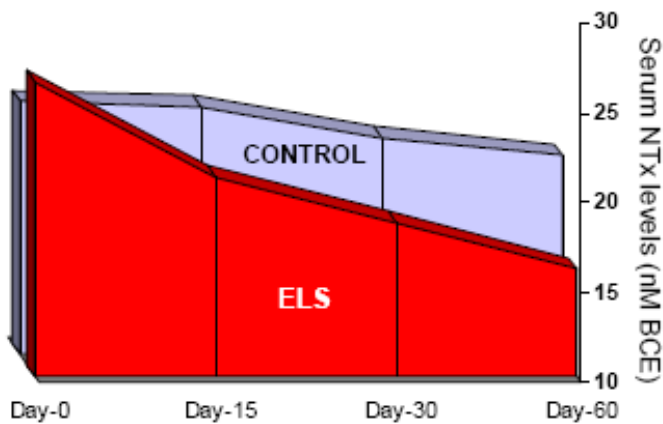
RESULTS

Control Group = Calcium only

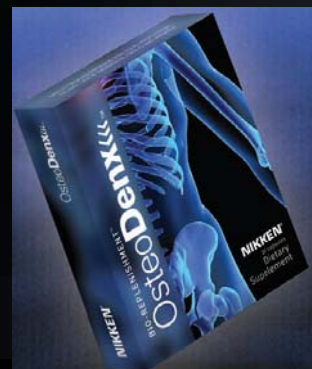
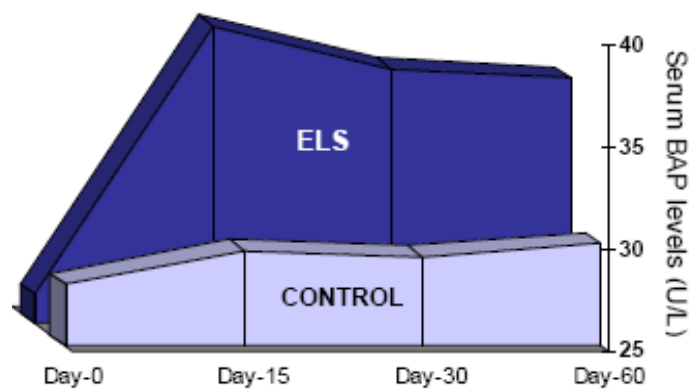
ELS Group = ELS + Calcium

(ELS = generic OsteoDenx™)

BONE RESORPTION

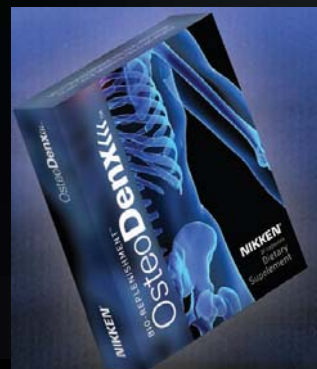


BONE FORMATION



OsteoDenx<<<™

- OsteoDenx™ is not a calcium supplement.
 - It is a *potentiator* (activator) of calcium and other minerals already in the system.
- In other words, it makes the minerals we take in more available to our systems and allows us to receive their full benefits.



Suggestions for Use

- Take at evening meal along with **Nikken's Bio Directed Calcium**
 - absorbed best with food
 - utilized best during sleep
- Safe for all ages
 - infants and young children too
- Safe with supplements or prescription medications, including chemotherapy drugs
- 1 capsule per day for prevention
- 2 per day for corrective purposes
- Safe to give to pets with bone challenges
 - reduce dosage based on pet's weight



**It is at night that
the body rebuilds
the bone matrix.**

